



MATATIELE LOCAL MUNICIPALITY

Research and analysis of ward profiling: Ward based plans

WARD 24

May 2018

TSHANI
CONSULTING C.C.

Contents

1. Executive Summary of Ward4

2. Methodology.....5

3. Ward Overview.....5

4. Socio Economic Analysis6

5. Built Environment Assessment..... 13

6. Current Projects 14

7. Ward Needs and Priorities 14

8. Stakeholder within Ward 15

9. Key Social Challenges..... 15

List of Tables

Table 1: SWOT Analysis – Community Based Planning Program 2017 (Data Collection).....	5
Table 2: Major Event within the Ward – Community Based Planning Program 2017 (Data Collection)	5
Table 3: Programmes within the Ward – Community Based Planning Program 2017 (Data Collection)	6
Table 4: Population Size and Distribution within the Ward – Community Based Planning Program 2017 (Data Collection).....	7
Table 5: Social Grant Dependency within Ward - Community Based Planning Program 2017 (Data Collection).....	8
Table 6: Child and Female Headed Households within the Ward - Census 2011	8
Table 7: Education Facilities within Ward - Community Based Planning Program 2017 (Data Collection).....	10
Table 8: Churches and Religious Organisations within the Ward - Community Based Planning Program 2017 (Data Collection).....	10
Table 9: Health Care Facilities: Community Based Planning Program 2017 (Data Collection)	10
Table 10: Community Halls - Community Based Planning Program 2017 (Data Collection)	11
Table 11: Economic Activity - Community Based Planning Program 2017 (Data Collection).....	12
Table 12: Tourism Activities - Community Based Planning Program 2017 (Data Collection).....	12
Table 13: Agricultural Activities within the Ward- Community Based Planning Program 2017 (Data Collection).....	12
Table 14: Products produced within the Ward- Community Based Planning Program 2017 (Data Collection).....	13
Table 15: Existing Skills within the Ward: Community Based Planning Program 2017 (Data Collection) ..	13
Table 16: Access to water- Community Based Planning Program 2017 (Data Collection)	13
Table 17: Access to sanitation- Community Based Planning Program 2017 (Data Collection)	14
Table 18: Main Source of Energy- Community Based Planning Program 2017 (Data Collection)	14
Table 19: Current Projects- Community Based Planning Program 2017 (Data Collection).....	14
Table 20: Ward Needs- Community Based Planning Program 2017 (Data Collection)	15
Table 21: Ward Priorities- Community Based Planning Program 2017 (Data Collection).....	15
Table 22: Stakeholders consulted in community engagements sessions- Community Based Planning Program 2017 (Data Collection).....	15
Table 23: Key Social Challenges- Community Based Planning Program 2017 (Data Collection)	15

List of Figures

Figure 1: Gender Distribution	7
Figure 2: Age within Ward Distribution – Census 2011	7

Figure 3: Language Proficiency within Ward – Census 2011.....	8
Figure 4: Gender of Household Head - Census 2011	9
Figure 5: Types of Dwelling within Ward – Census 2011	9
Figure 6: Individual Monthly Income - Census 2011	12
Figure 7: Source of Water supply within the Ward - Community Based Planning Program 2017 (Data Collection).....	13

List of Plans

Plan 1: Ward 24 Locality	5
Plan 2: Education Facilities.....	10
Plan 3: Health Care Facilities.....	11
Plan 4: Other Social Facilities.....	11

The following sections have been identified and populated as part of the analysis for Ward 24. The headings which have been covered are seen as critical topics for the ward analysis. When broken down one can properly understand and interpret the spatial economic status quo and development trajectory of the Ward.

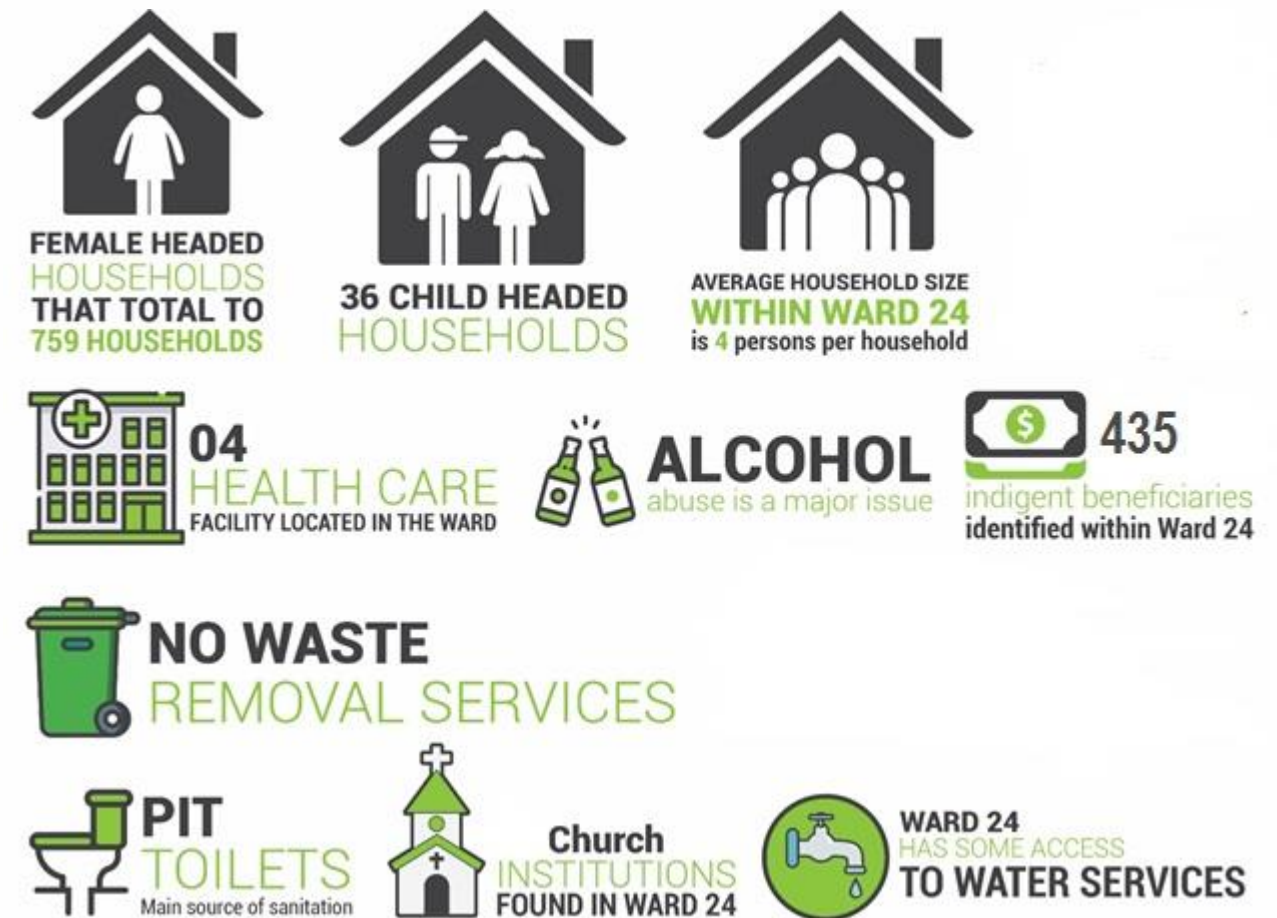
1. Executive Summary of Ward

Ward 24 is situated in the heart of MLM. The Ward is surrounded by wards 18 and 23. The Ward 24 comprises of Ramafole, Moriting, Maqhatseng, Linotsing, Zimpofu, Purutle, Mahlake, Soloane, Mdeni and Zingcuka villages. As per the Community Based Plan Programme 2017 (Data Collection) the total population for ward 24 is estimated at 5 319 and number of households is estimated at 2433 households from community survey that was conducted. The gender split within the ward is made up of 54% female and 46% males. The average household size within Ward 24 is 4 persons per household. It is evident that the most spoken language within the ward is isiXhosa followed by Sesotho.

The products such as traditional clothing and crafts are available within the ward that are locally produced. The ward has also abundant arable land which is good for cash crops, maize production and forests.

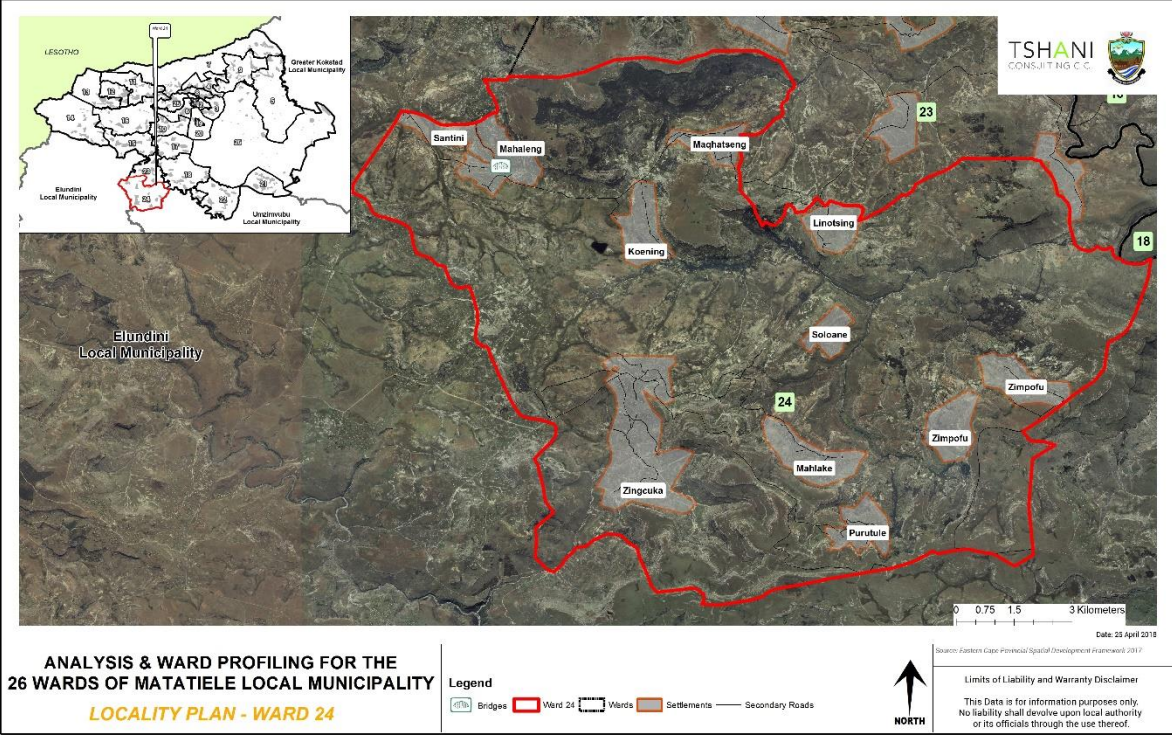
There are four (4) health care facilities within the ward which are two (2) clinics one located in Ramafole the other one in Isilindini and two (2) of these are mobile clinics that are located in Zimpofu village. These clinics provide basic health services such as family planning, basic check-ups and immunization among others.

The main source of energy within the ward is electricity, out of 10 villages one village does not have access to electricity which is Purutle village. In terms of water and sanitation, the District Municipality (ANDM) currently provides water and sanitation to Matatiele Local Municipality area. There is currently a large number of backlog with regards to the provision of water within this ward. As per the Community Based Plan Programme 2017 (Data Collection) only five villages have access to water through communal taps. Five villages have no community taps which results in many households having to walk at least 1km away to source water from the dams/streams.



1.1. Locality

Ward 24 is situated in the heart of MLM. The Ward is surrounded by wards 18 and 23. As depicted in the plan below, the main villages within Ward 24 are Ramafole, Moriting, Maqhatseng, Linotsing, Zimpofu, Purutle, Mahlake, Soloane, Mdeni, Zingcuka. Ward 24 is also directly adjacent to Umzimvubu Municipality. It is to be noted that all Wards which have been listed were identified through the community outreach programmes. The Village names captured on plans are as per the villages which exist on the GIS and Census databases.



Plan 1: Ward 24 Locality

2. Methodology

The methodology utilised for the analysis and profiling in this report was derived as follows:

- 1. Synthesis an interpretation of questionnaires and community feedback;
- 2. Translated information into a Strength, Weakness, Opportunities and Threats analysis;
- 3. Conducted a verification process on the populations profiles, social profile and economic profile using Census 2011 data which was conducted at a Ward level;
- 4. A detailed GIS mapping exercise was completed in order to translate the findings into spatially represented outcomes;
- 5. Ward needs, and priorities were identified for the wards;
- 6. Needs identified for the ward were translated into projects and a consolidated implementation plan together within financial implications was completed.

The analysis of ward 24 also took its 'point of departure' from the primary data which was available from the data collection and community consultation completed in the previous phase

3. Ward Overview

The section below highlights the specific sections which were analysed in relation to ward 24.

3.1 SWOT Analysis

The SWOT analysis was developed, through a series of engagement sessions with the local community and traditional leadership of Ward 24, by the municipality.

<p>STRENGTHS</p> <ul style="list-style-type: none">• Youthful population• Available land for crops.• Forests	<p>WEAKNESSES</p> <ul style="list-style-type: none">• Raising unemployment,• Skill shortage,• Substance abuse,• Poor access roads in some villages
<p>OPPORTUNITIES</p> <ul style="list-style-type: none">• Farming• Tourism.• Sand	<p>THREATS</p> <ul style="list-style-type: none">• Veldfires,• Crime (burglaries and theft)• Prevalence of HIV/AIDS

Table 1: SWOT Analysis – Community Based Planning Program 2017 (Data Collection)

3.2 Major events within the Ward

The table below highlights the major events which have taken place /happened within Ward 24 over the last couple of years. The ward has experienced positive investment in the form of a civic centre, sports fields and tarring of internal streets.

EVENT/ OCCURANCE	YEAR	IMPACT
World aids day in Ramafole village	2012	People without id's did applications for id's
Electricity switch on	2014	660 beneficiaries and families received electric appliances.
World aids day in Mahlake village	2017	People made aware of HIV/AIDS stigma
Boreholes handover	2016	Three villages benefited clean water.

Table 2: Major Event within the Ward – Community Based Planning Program 2017 (Data Collection)

3.3 Services/ Infrastructure and Programmes Within the Ward Within The 5-Year Period (2012-2016)

Ward 24 has experienced a fair amount of infrastructure investment from the year 2016. It is evident that the benefits of these projects have benefited the ward as well as the municipality as a whole.

Type	Year	Beneficiaries	Status / present condition	Impact
Moriting community hall	2013	The whole community	Good condition	They use for community meetings and municipal IDP's.
Ramafole electrification	2014	Ramafole community.	Good	All households have been electrified, school, and clinic.
Moriting electrification	2016	Moriting community	Good	All households have electricity.
Maqhatseng	2016	Maqhatseng community	Good	All households have electricity
Linotsing	2016	Linotsing community	Good	All households have electricity.
Zimpofu solar system and electricity	2016	Zimpofu community	Good	All households have electricity
Mahlake	2016	Mahlake community	Good	All households have electricity.
Soloane solar system and electricity	2016/17	Soloane community	Good	Same refuse solar systems have only electricity.
Purutle solar system	2016	Purutle community	Good	All households have solar system.
Madlangeni solar system	2016	Madlangeni community	Good	All households have solar system.
Sanitation all villages within the ward.	2014	All villages	Good	All households have access to sanitation
Ramafole, Mdeni and Zingcuka-Madlangeni water	2016	The community of the mentioned villages	Good	Four villages have access to water

Type	Year	Beneficiaries	Status / present condition	Impact
Ramafole DR804 maintainance	2015	Ramafole to linotsing community	Good	10 Ramafole youth community members were employed.
Mdeni DR08081 to Mahlake maintenance	2016/17	Mdeni,soloane, and Mahlake community	Good	Mdeni and Mahlake community members have access to their villages and 20 people from mentioned villages were employed.
Soloane dipping tank	2012	Soloane community	Good	Small farmers vaccinate their cattle and sheep in dipping facility and 15 people from Soloane were employed

Table 3: Programmes within the Ward – Community Based Planning Program 2017 (Data Collection)

4. Socio Economic Analysis

4.1. Population Profile

The sub sections below provides an analysis of the population profile of ward 24.

4.1.1. Population Size and Distribution

The total population of Ward 24 is 5 568.

LIST OF VILLAGES/ LOCATIONS/SUB AREAS	OTHER NAME/S FOR THE VILLAGE/ LOCATION	NUMBER OF HOUSEHOLDS			POPULATION SIZE (NUMBER OF PEOPLE)		
		Community Feedback	Census 2011	Projected Household by 2050 growing at 0.3% Per Annum	Community Feedback	Census 2011	Projected Population by 2050 growing at 0.4% Per Annum
Ramafole		660			1035		
Moriting		266			650		
Maqhatseng		205			550		
Linotsing		186			520		
Zimpofu		184			552		
Purutle		145			320		
Mahlake		176			432		

Soloane		110			317		
Mdeni		231			510		
Zingcuka	Madlangeni	270			433		
Total Population - Ward 24:		2433	1374	1516	5319	5568	6326

Table 4: Population Size and Distribution within the Ward – Community Based Planning Program 2017 (Data Collection)



4.1.2. Gender Distribution

The chart below depicts that 54% of the total population of Ward 24 are female. This is typical of most wards within Matatiele. This statistic also speaks to the table below on child headed households.

Gender Distribution

■ Male ■ Female

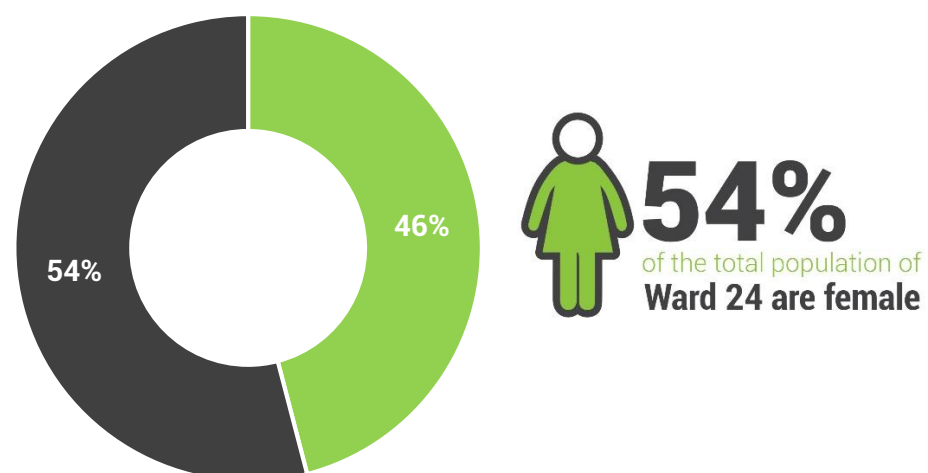


Figure 1: Gender Distribution

4.1.3. Age

The dominant age group in Ward 24 is the classified age group of 15-19yrs. The population of this ward is dominated by younger people (00-19). There is a sharp decline in the number of people per age group from ages 20 years and older.

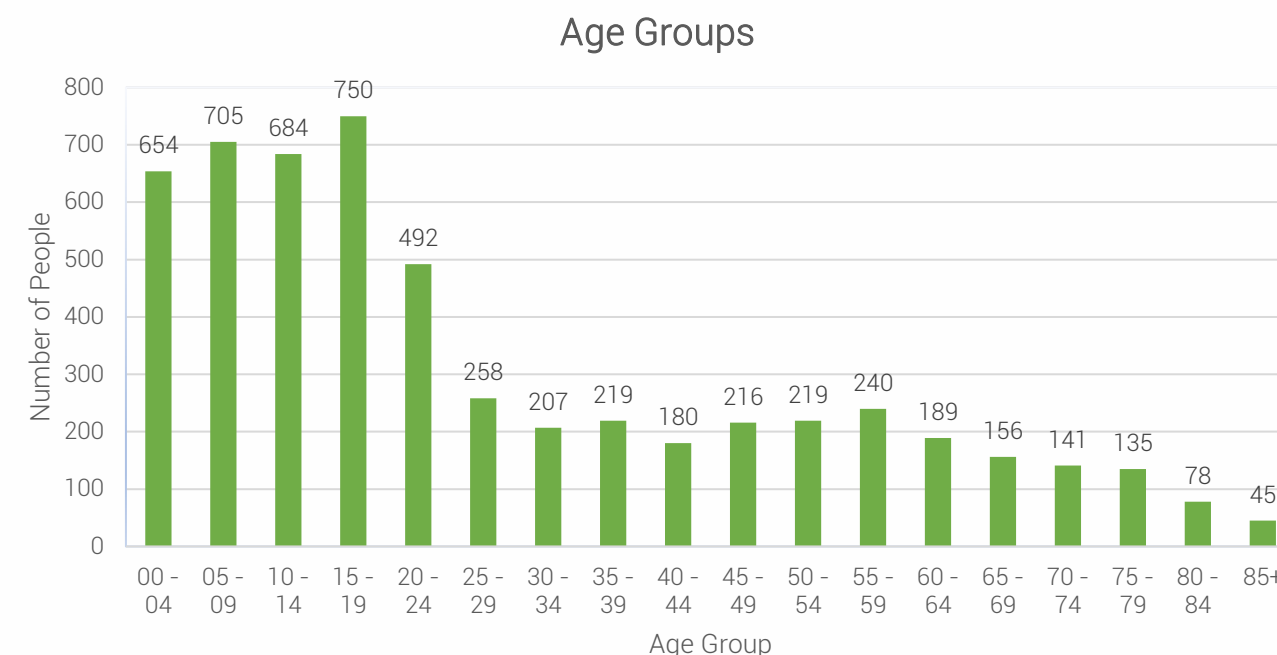


Figure 2: Age within Ward Distribution – Census 2011

4.1.4. Language Distribution

It is evident that the most spoken language in Ward 24 is isiXhosa, followed by Sesotho. The language preference correlates to the racial split within ward 24 and is an indication of the language preference which people appreciate.

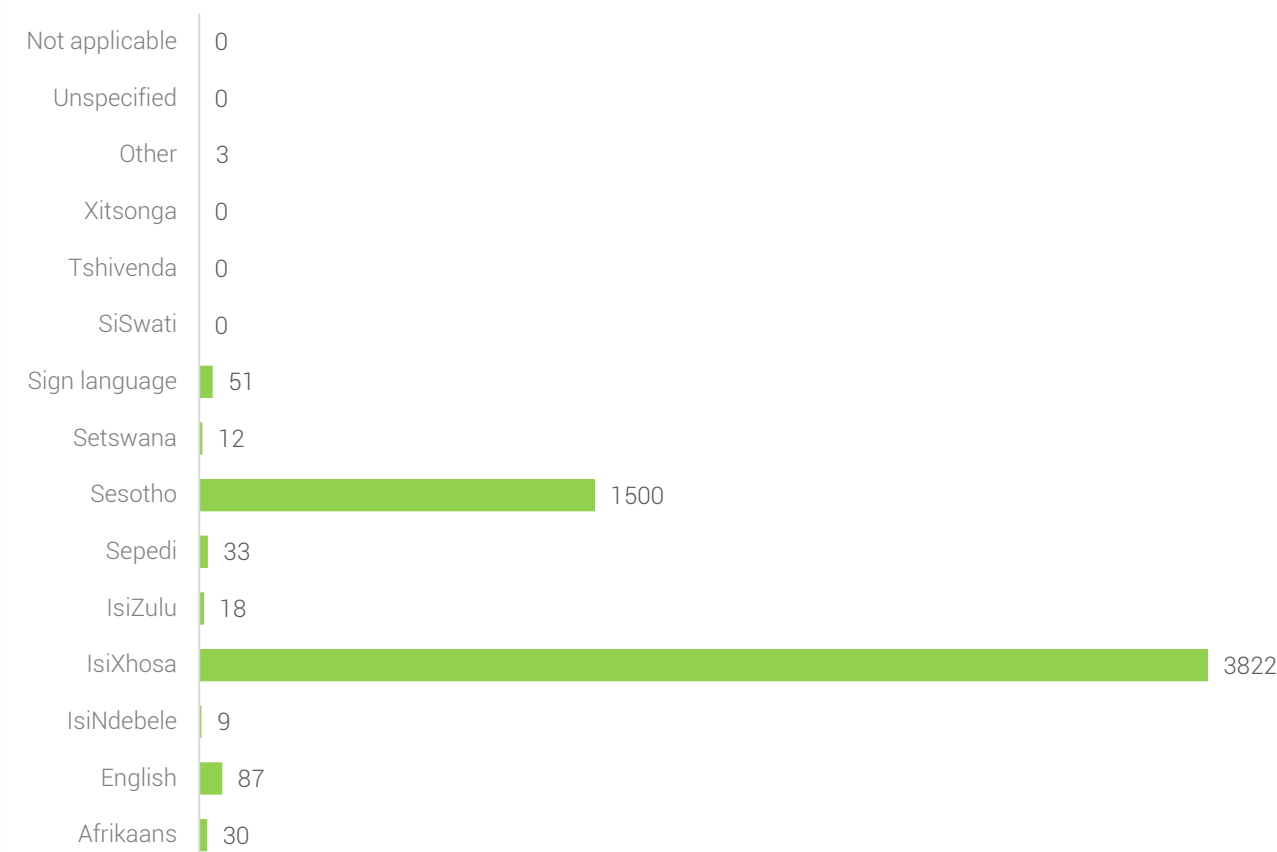


Figure 3: Language Proficiency within Ward – Census 2011

4.1.5. Social Grants

The 2016 survey which was completed by MLM no social grant beneficiaries were identified within the LM although the number of children between the ages of 00-14yrs shows to be 2043 from the Census 2011 data.

TYPE OF SOCIAL ASSISTANCE OFFERED	NUMBER OF HOUSEHOLDS
	Community Feedback
Old age grant	-
Foster care grant	-
Child support grant	-
Grant in aid	-

Table 5: Social Grant Dependency within Ward - Community Based Planning Program 2017 (Data Collection)

4.1.6. Indigent Support

A rural municipality with a high dependency rate on social assistance; MLM has a large number of indigent households. Particularly for this ward 24. Although the number is high, it is only a few households that receive indigent supports from the municipality. The challenges that affect to the provision of such support, include beneficiaries with no properly documents, challenges with verification of beneficiaries amongst other issues. The current indigent support register show that only 435 beneficiaries registered in this ward.

4.2. Household Profile

The section below details of households within Ward 24 in terms of their size, gender of heads of households and distribution.

4.2.1. Average Household Size

The household within Ward 24 include an average of four (4) persons per household.

4.2.2. Heads of Households

The issue of child headed households remains a major challenge in Ward 24 and MLM alike. There is a need to prioritise support in the form of community awareness and social programmes in keeping with teenage pregnancy and contraception. The challenges is exacerbated by the trends of a larger part of the population which is represented by females also heading many households.

Based on the table below it is evident that the issue of child headed households is a major issue as there is a total of 60 child headed households recorded by the community survey conducted by the MLM.

Villages	Child-Headed households		Female-Headed Households	
	Community Feedback	Census 2011	Community Feedback	Census 2011
Ramafole	11		22	879
Moriting	04		14	594
Maqhatseng	04		12	
Linotsing	03		17	
Zimpofu	04		6	
Purutle	06		11	
Mahlake	10		14	
Soloane	09		12	
Mdeni	09		15	
Zingcuka			11	
Total	60	36	134	759

Table 6: Child and Female Headed Households within the Ward - Census 2011



The graph below indicates that approximately 55% of households in ward 24 are headed by women.

Gender of Household Head

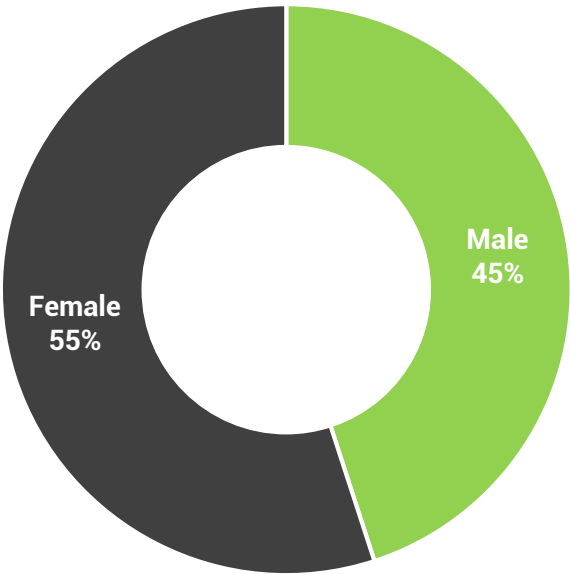


Figure 4: Gender of Household Head - Census 2011

4.2.3. Household Dwelling types

The majority of people in Ward 24 live in Traditional Dwellings/Structures. A significant number also live in a brick/ concrete constructed house.

Type of Dwelling

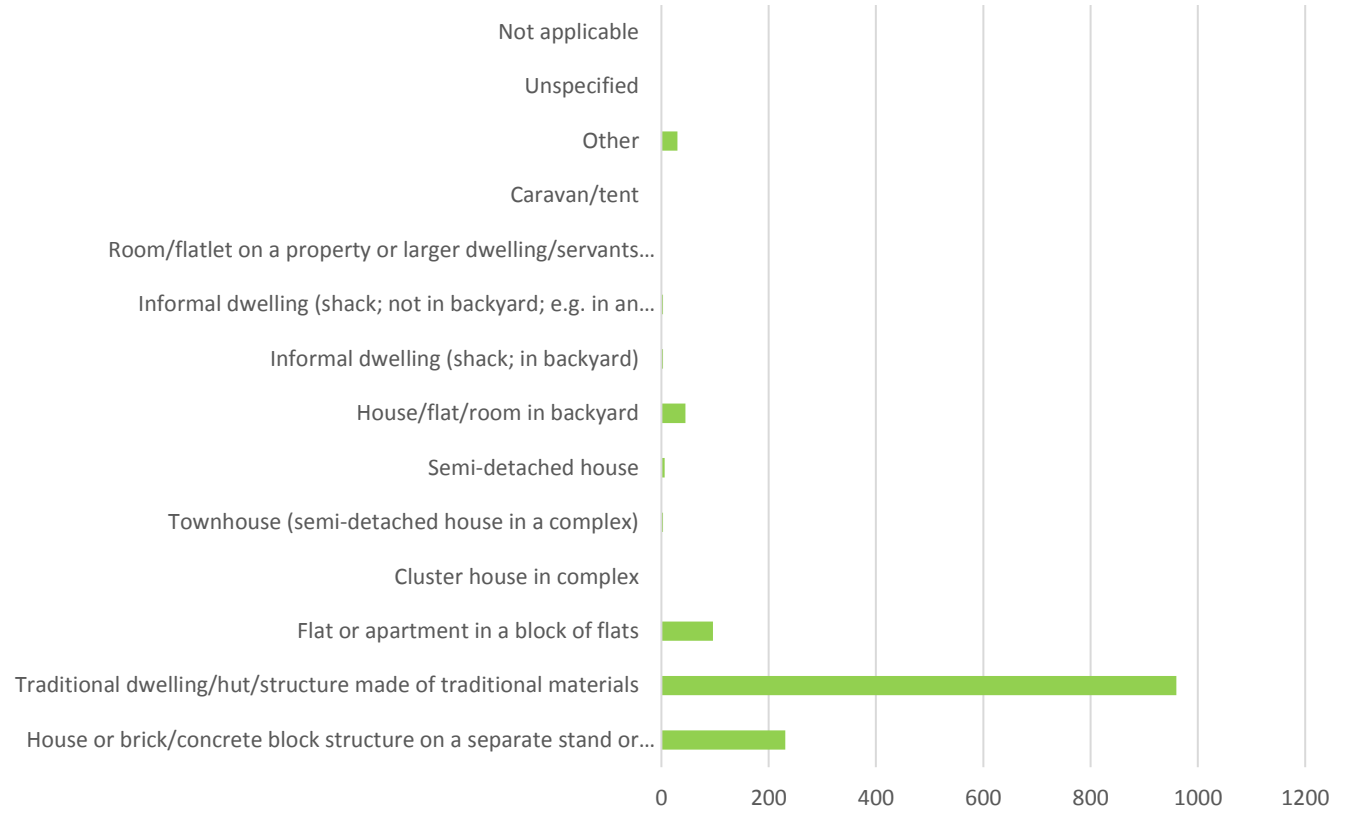


Figure 5: Types of Dwelling within Ward – Census 2011

4.3. Social Profile

4.3.1. Education Facilities: Community Feedback

The range of schools identified in the table below was developed form the community feedback sessions.

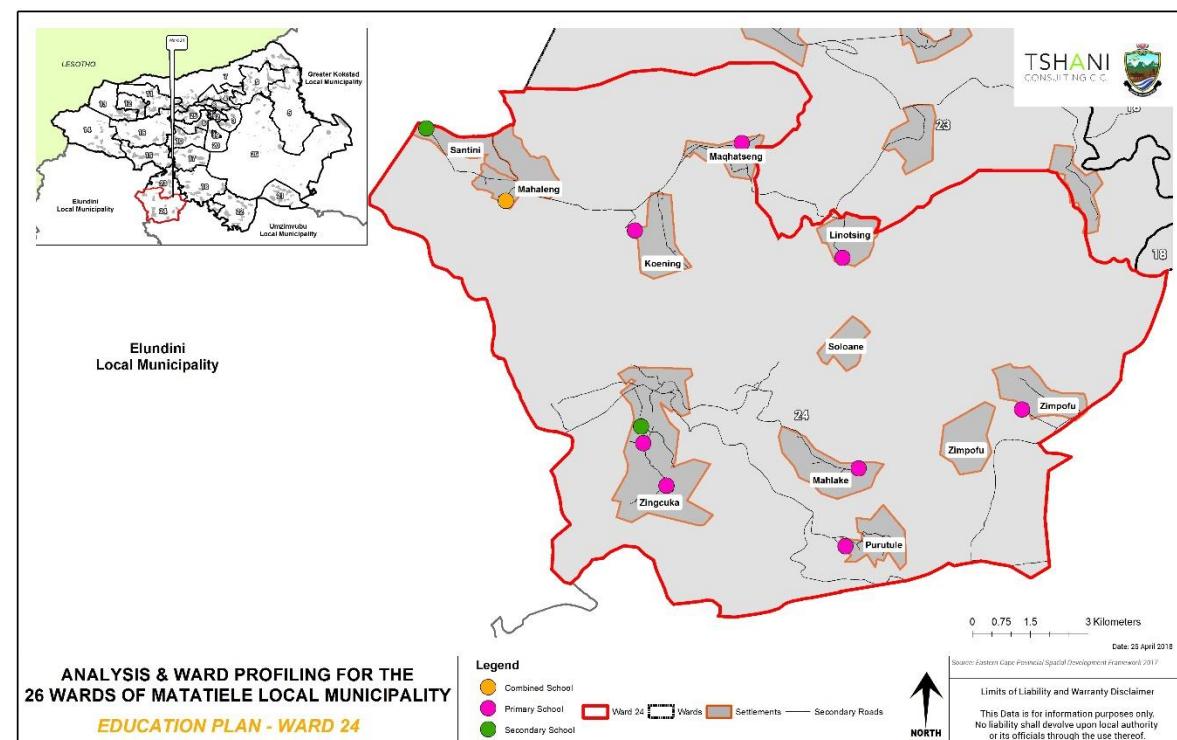
NAME	TYPE	AREA LOCATED	NUMBER OF LEARNERS
Ramafole S.S.S	Secondary school	Ramafole	346
Mthumasi S.P.S	Primary school	Ramafole	280
Naledi	Lower primary	Ramafole	35
Masikhanyiseni	Pre-school	Ramafole	25
Moriting S.P.S	Primary school	Moriting	164
Phakamani	Pre-school	Moriting	

Maqhatseng S.P.S	Primary School	Maqhatseng	125
Linotsing S.P.S	Primary School	Linotsing	144
Zimpofu S.P.S	Primary School	Zimpofu	45
Purutle	Lower Primary	Purutle	36
Mahlake S.P.S	Primary School	Mahlake	56
Zibi meyer S.S.S	Secondary School	Zingcuka	372
Zibi meyer S.P.S	Primary School	Zingcuka	252

Table 7: Education Facilities within Ward - Community Based Planning Program 2017 (Data Collection)

4.3.2. Education Facilities

Ward 24 comprises of combined schools, Primary schools and Secondary school within ward 24.



Plan 2: Education Facilities

4.3.3. Churches and Religious Organisations: Community Feedback

The range of religious facilities identified in the table below was developed form the community feedback sessions.

NA ME	LOCATION/AREA	NUMBER
Deeper life family church	Ramafole	1
Apostolic faith mission	Ramafole, Zimpofu	2
Anglican church	Ramafole, Mahlake, Mdeni	3
Morivian church	Ramafole	1
Wesile church	Ramafole, Mdeni (02), Moriting, Zimpofu	5
Zion	Ramafole, Mahlake	2
12 Apostolic	Mahlake	1
Assemblies of God	Zimpofu	1
St Johns	Mdeni	1
Moravian church	Mahlake, Ramafole	2
Lutheran church	Mahlake	1
Roman Catholic church	Mdeni	1
Fura	Moriting	1

Table 8: Churches and Religious Organisations within the Ward - Community Based Planning Program 2017 (Data Collection)

4.3.4. Health Care Facilities: Community Feedback

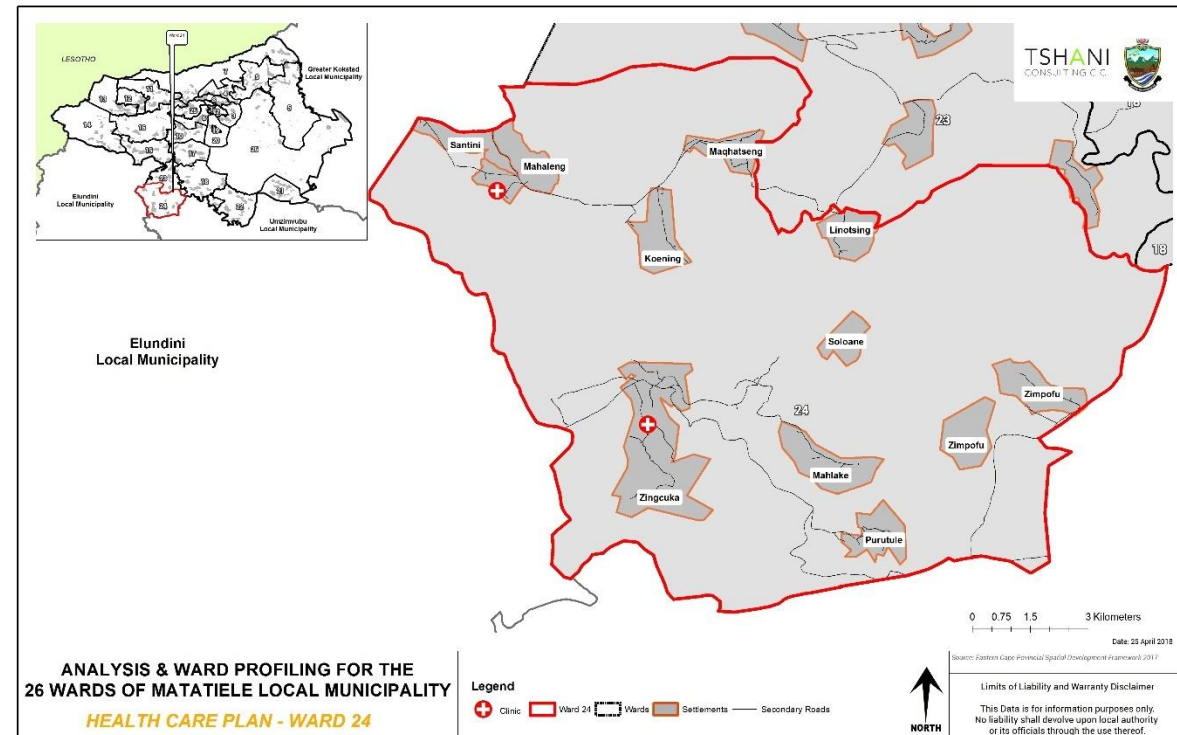
There are a total of four (4) health care facilities within the ward two (2) of the services are clinics and two (2) are mobile clinics.

Name and type	Area located	Primary services provided
Mthumasi clinic	Ramafole	All services
Isilindini clinic	Zingcuka	All services
Mobile clinic	Zimpofu	All services
Mobile clinic	Zimpofu	All services

Table 9: Health Care Facilities: Community Based Planning Program 2017 (Data Collection)

4.3.5. Health Care Facilities:

The map below spatially identified the clinic which are located 2 clinics within Ward 24



Plan 3: Health Care Facilities

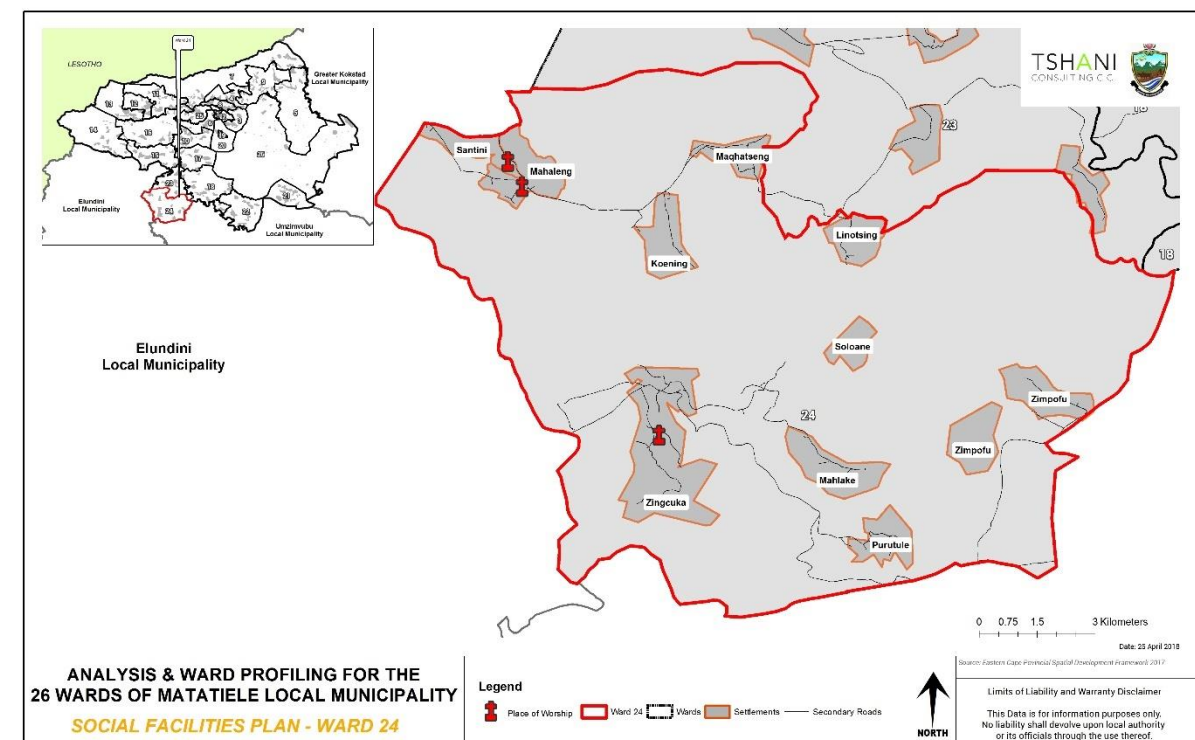
4.3.6. Community Hall: Community Feedback

Name and type	Area located
Ramafole community hall	Ramafole
Moriting community hall	Moriting
Zibi Meyer community hall	Zingcuka

Table 10: Community Halls - Community Based Planning Program 2017 (Data Collection)

4.3.7. Other Social Facilities

The map below spatially identifies places of worship within ward 24



Plan 4: Other Social Facilities

4.4. Economic Profile

4.4.1. Individual Monthly Income: Census 2011

Over half of the population of ward 24 receives less than R400 or no income monthly. This community has low income earners.

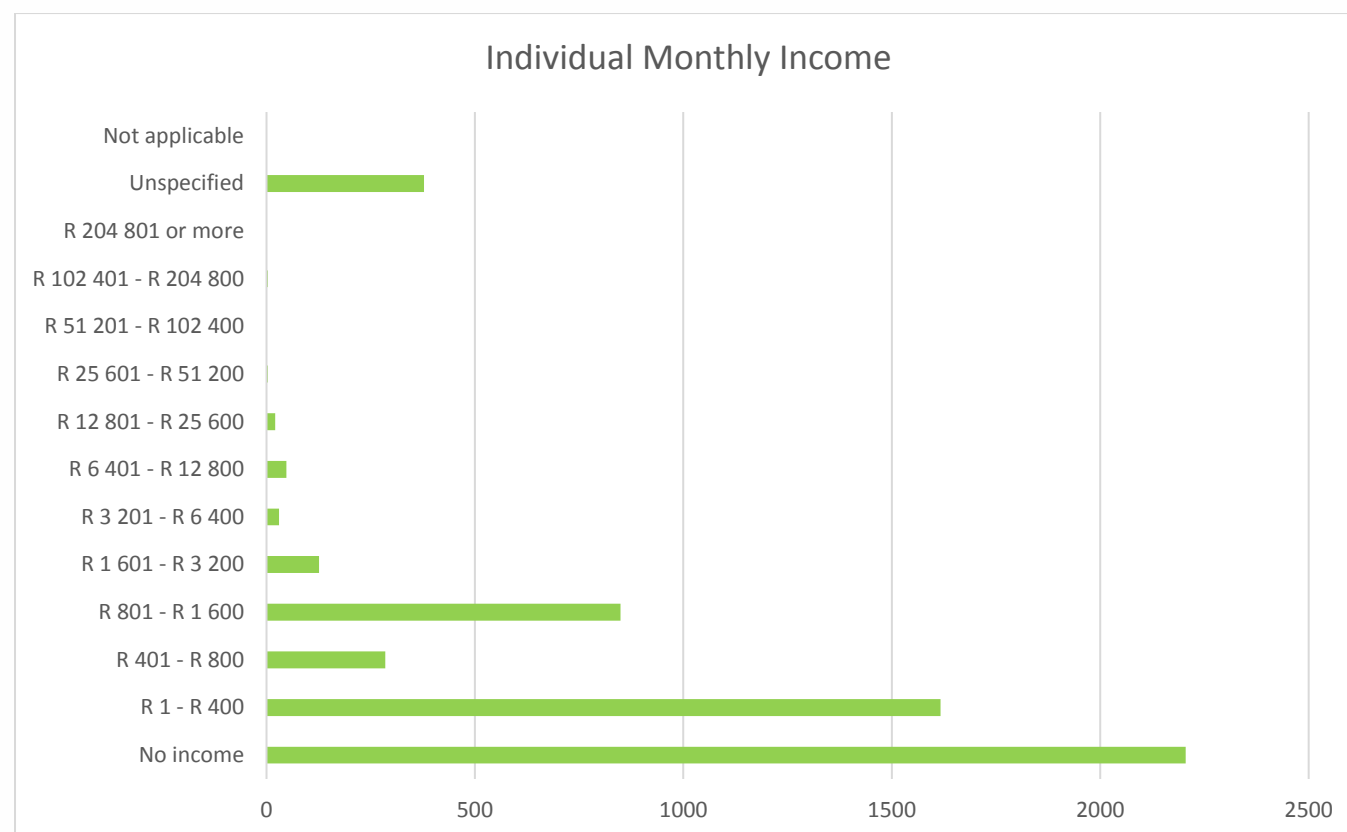


Figure 6: Individual Monthly Income - Census 2011

4.4.2. Economic Activities: Community Feedback

It is noted that spaza shops are the most dominant in ward 24. Fourteen (14) spaza shops were noted at Ward 24 and no store that sells alcoholic beverages was noted.

RETAIL(INDICATE SHOPS, SPAZA SHOPS, CAFÉ, TARVENS, SALONS, ETC)	
TYPE	LOCATION
Spaza shop	Ramafole (3), Moriting (3), Linotsing, Zimpofu (4), Maqhatseng, Purutle (2)
Shop	Mdeni, Zinguka, Moriting

Table 11: Economic Activity - Community Based Planning Program 2017 (Data Collection)

4.4.3. Tourism Activities

There 1 tourist attraction in ward 24. The indication of tourism facilities present indicates that there is room for growing a broader tourism base within Ward 24.

TOURISM (INDICATE B&B'S, HOTELS, ATTRACTION SITES, ETC)	
TYPE	LOCATION
Khoi Khoi drawings and a rock created like woman	Purutle

Table 12: Tourism Activities - Community Based Planning Program 2017 (Data Collection)

4.4.4. Agricultural Activities

The community of ward 24 has not indicated practises both commercial and subsistence farming for their agricultural products.

TYPE OF PRODUCTS	FOR HOUSEHOLD CONSUMPTION	FOR SELLING TO THE COMMUNITY
Cattle	No	No
Sheep	No	No
Goats	No	No
Horses	No	No
Poultry	No	No
Vegetables	No	No
Fruits		
Grains		

Table 13: Agricultural Activities within the Ward- Community Based Planning Program 2017 (Data Collection)

4.4.5. Products Produced in Wards

The table below indicates that products such as traditional clothing and crafts are available within the ward that are locally produced. Such individuals responsible for these activities should be better supported and encourages to expand.

TYPE OF PRODUCTS	AREAS / VILLAGES	FOR HOUSEHOLD CONSUMPTION	FOR SELLING TO THE COMMUNITY
Clothing	Ramafole	✓	✓
Maize	Ramafole	✓	✓
Vegetable	Ramafole	✓	✓
Vegetable	Maqhatseng	✓	✓
Poultry	Zimpofu	✓	✓
Vegetable	Zimpofu	✓	✓

Animal product	All villages in the ward	√	√
----------------	--------------------------	---	---

Table 14: Products produced within the Ward- Community Based Planning Program 2017 (Data Collection)

4.4.6. Existing Skills

The ward constitutes of some diverse skills which is a major asset for the ward. Such individuals need to be further trained and opportunities to mentor other unemployed individuals within the community should be encouraged. The entrepreneurs within ward should also be given better access to market opportunities. There a broad range of professionally qualified individuals whom also are major assets for Ward 24.

TYPE OF SKILLS	EXISTING (INDICATE WITH YES/NO)	TYPE OF SKILLS	EXISTING (INDICATE WITH YES/NO)
Carpenters	Yes	pottery	Yes
Plumbing	Yes	teachers	Yes
Builders	Yes	Police	Yes
Artists	Yes	Health officials	Yes
Gardening	Yes	Accountants	Yes
Cooking	Yes	Engineers	Yes
Sewing	Yes	Lawyers	Yes
Writing	Yes	Other (indicate)	
Drivers	Yes		
Farmers			

Table 15: Existing Skills within the Ward: Community Based Planning Program 2017 (Data Collection)

5. Built Environment Assessment

5.1 Household Access to Waste Removal

The Municipality does not provide the waste collection removal in this ward, hence ward 24 people dispose their own waste.

5.2 Access to Water

The main supplier of water is the District Municipality (ANDM) which currently provides water to Matatiele area. There is a large backlog with regards the provision of water as a results a 5villages have to walk at least 1km away to source water from the dams or streams as shown below table. Within the whole ward, five (5) villages have access to community taps.

VILLAGE/LOCATION	COMMUNITY TAPS	WATER-INSIDE YARD	WATER-INSIDE HOUSE	BOREHOLES	DRAW WATER FROM STREAMS, DAMS, RIVER
RAMAFOLE	√				RAMAFOLE
MORITING	√				LINOTSING
MAQHATSENG	√				ZIMPOFU
ZINGCUKA-MADLANGENI	√				PURUTLE
MDENI	√				MAHLAKE

Table 16: Access to water- Community Based Planning Program 2017 (Data Collection)

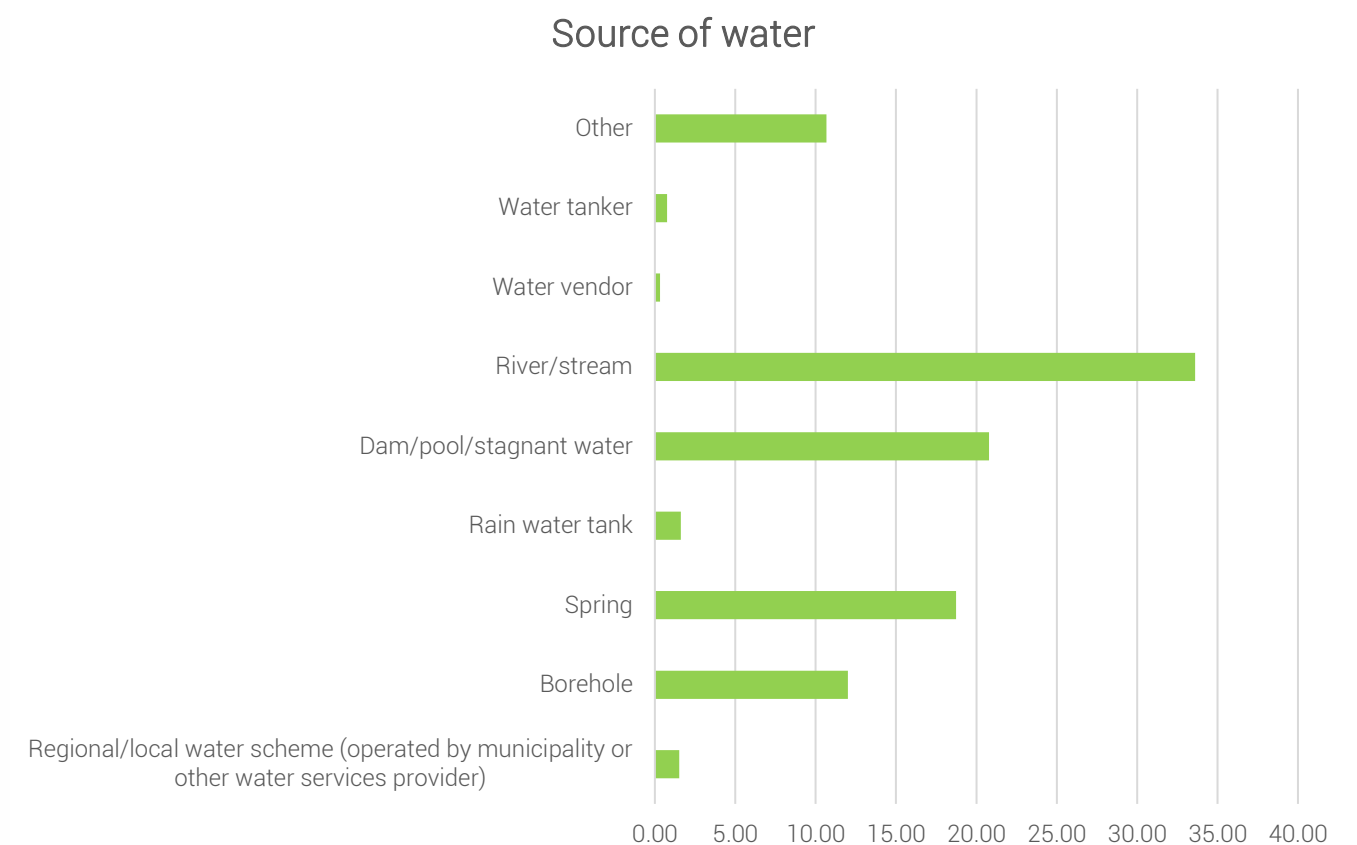


Figure 7: Source of Water supply within the Ward - Community Based Planning Program 2017 (Data Collection)

5.3. Access to Sanitation

As per Community Based Planning Program (2017 Data Collection) all villages within ward 24 have access to ventilated pit toilets. This is shown in the table below.

VILLAGE/LOCATION	VENTILATED PIT TOILETS	FLUSH TOILETS	Other
RAMAFOLE	√		
MORITING	√		
MAQHATSENG	√		

LINOTSING	✓		
ZIMPOFU	✓		
PURUTLE	✓		
MAHLAKE	✓		
SOLOANE	✓		
MDENI	✓		
ZINGCUKA	✓		

Table 17: Access to sanitation- Community Based Planning Program 2017 (Data Collection)



5.4. Main Source of Energy

As per the community based planning 2017 (Data Collection) the main source of energy within Ward 03 is electricity, nine (9) villages have electricity, there is only one (1) village noted not to have electricity within the ward which is Purutle. This indicates that the level of service within the ward is relatively high.

VILLAGE/LOCATION	ELECTRICITY	SOLAR	NO ELECTRICITY/SOLAR
Ramafole	Yes	Yes	
Moriting	Yes		
Maqhatseng	Yes		
Linotsing	Yes		
Zimpofu	Yes	Yes	
Purutle		Yes	
Mahlake	Yes		
Soloane	Yes	Yes	
Mdeni	Yes	Yes	
Zingcuka	Yes	Yes	

Table 18: Main Source of Energy- Community Based Planning Program 2017 (Data Collection)

6. Current Projects

The following table highlighted the key projects which have been identified by the community. The projects are mainly linked to education.

No	PROJECT/PROGRAMME NAME	STATUS	WHO IS RESPONSIBLE
1	E.P.W.P REA-HLOEKISA	Active	Mr .Mngenela
2	C.W.P	Active	Mr .M. Mdodana
3	E.P.W.P DR08503	Active	Mr. T. Mbobo
4	E.P.W.P DR8084	Active	Mr .M. Sikhafungana

Table 19: Current Projects- Community Based Planning Program 2017 (Data Collection)

7. Ward Needs and Priorities

The need and priorities which have been identified need to be prioritised in the municipal SDF and other local plans created. The projects range from short to long term projects and have been further broken down in the implementation plan.

VILLAGE/LOCATION/ SUB AREA	NEEDS IDENTIFIED
Maqhatseng	Water, Access road- Phororo, Fencing of grave site, Preschool, RDP Houses, Community hall, Clinic
Moriting	Access road to Kweneng, Selofong coop needs a tractor, Funding opportunities for poultry and piggery, RDP housing, Sports grounds, Additional water taps, Toilets for new houses, Scholar transport, High Must light, Ploughing of fields and LIMA, Electricity infills
Linotsing	Water, Access road, Clinic , Community hall, Sports field
Mahlake	Water, Preschool, Ploughing of fields, Donga rehabilitation, Community hall, Sports ground, Mobile clinic services
Soloane	Water, RDP houses, Fencing of Fields, LIMA, Sports ground, Mobile clinic services, Toilets in new houses
Purutle	Access road maintenance, Mobile clinic services , Electricity, Water: borehole, Community hall.
Ramafole	Toilets, Water: borehole, RDP houses, Preschools, Sports grounds, Access road from the preschool, Access road in the extension area
Mideni	Community hall, Sports ground, RDP Houses, Fencing of Fields

Moyeni	Access road, Electricity,RDP Houses
Zimpofu	Electricity, Water, Fencing, Feed for animals in winter, Access road to be extended and also maintained, Clinic services, Fencing of fields
Madlangeni at Zingcuka	Electricity, RDP houses, Access road to Ezibengwini

Table 20: Ward Needs- Community Based Planning Program 2017 (Data Collection)

WARD 24	
INFRASTRUCTURE PRIORITIES	SOCIO- ECONOMIC PRIORITIES
1. Water	Ploughing of fields and fencing
2. Electricity	Skills training centre
3. Access road	Support for youth cooperatives
4. Sports grounds	Mobile clinic services
5. RDP Houses	Assistance for learners: Bursaries, learner ships and internship programmes

Table 21: Ward Priorities- Community Based Planning Program 2017 (Data Collection)

8. Stakeholder within Ward

The table below highlights the stakeholders which were engaged with during the Community engagement sessions.

NAME OF STAKEHOLDER	CONTACT PERSON AND TEL
Farmers Associations	Mr M Lebelo 0833310571
Church Organisation	Mr T.Tame 0737373079
Clinic Committee	Mr Z. Ngcizela 0767055948
Transport Association	Mr. T. Mbobo
Traditional Leaders	Mr .L. Lebenya 0732394958
Traditional Healers	Mrs. M. Ponya
SGBS	Mss. T. Mahase 0794518104
Ward Committees	Mrs.S.B. Sholoko 0713546404
Youth Forum	Mr. M. Phaketsi 0838597485
Womens Forum	Mrs. M . Sephule 0765585628
Elderly Forum	Mss. M. Phaketsi 0734042862
Disability Forum	Mr . T. Majiyezi 0827093656

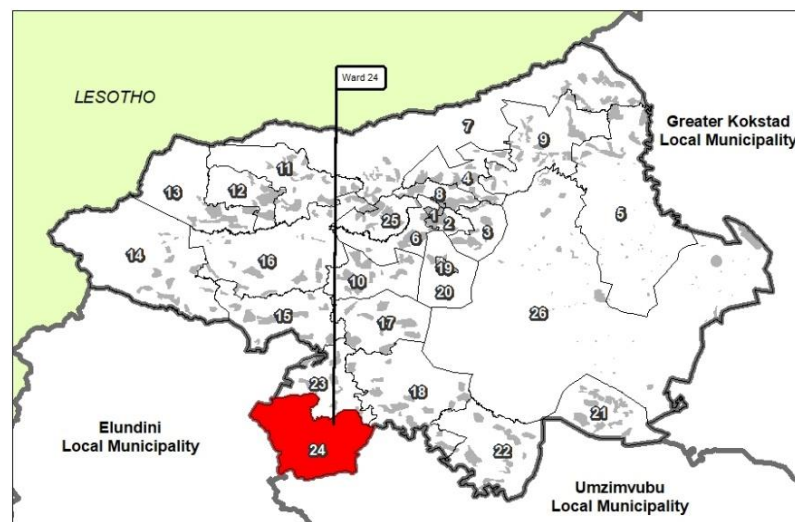
Table 22: Stakeholders consulted in community engagements sessions- Community Based Planning Program 2017 (Data Collection)

9. Key Social Challenges

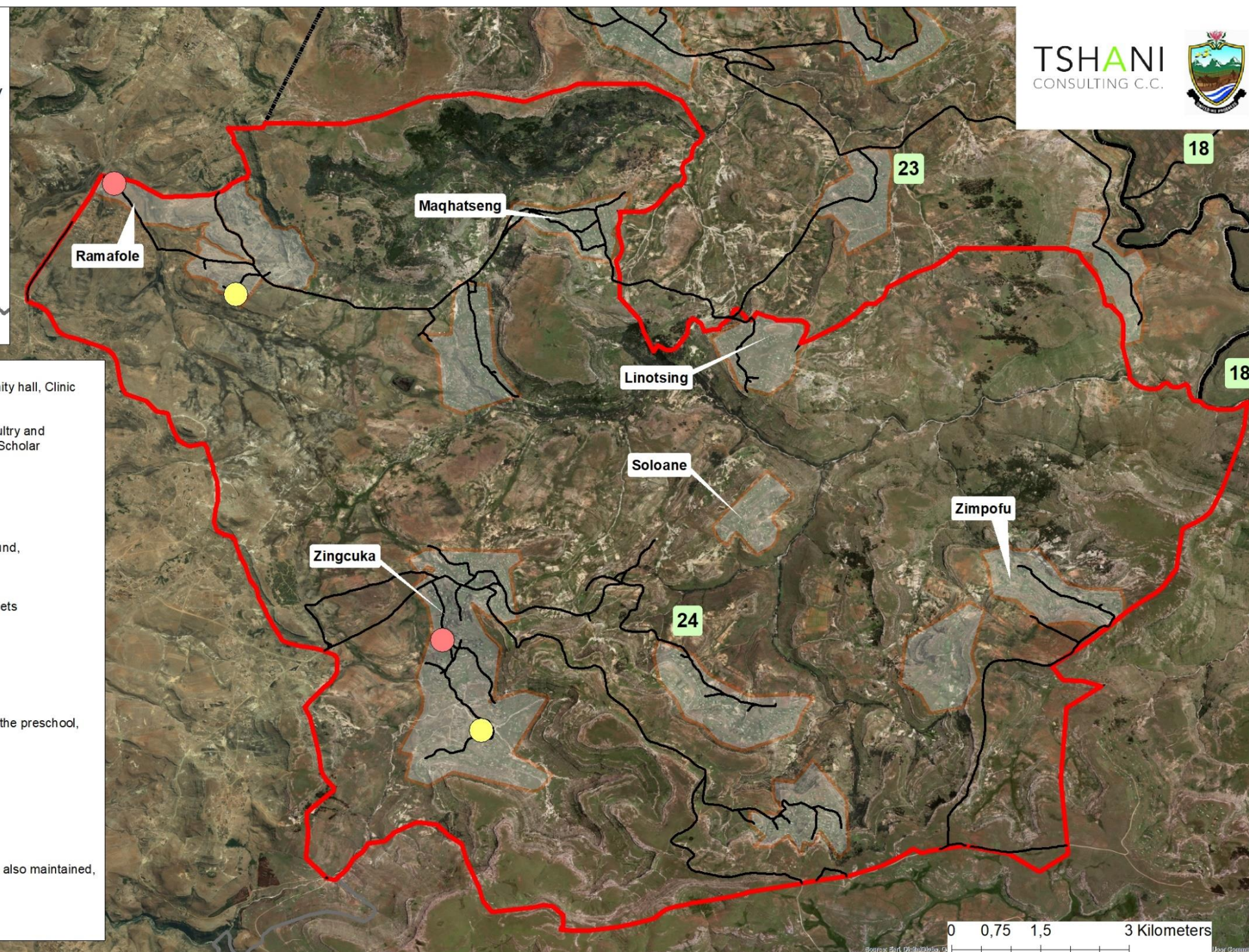
The key social challenges identified within the ward are crime as well as drug and alcohol abuse. These are issues that are prevalent in areas with an increased youth unemployment rates. The municipality should work with other departments to address these issues.

CHALLENGES IDENTIFIED	AFFECTED AREAS	IMPACT
Drugs and alcohol abuse	Mdeni, Zingcuka	
Crime	Purutle	

Table 23: Key Social Challenges- Community Based Planning Program 2017 (Data Collection)



- Maqhatseng**
Water, Access road- Phororo, Fencing of grave site, Preschool, RDP Houses, Community hall, Clinic
- Moring**
Access road to Kweneng, Selofong coop needs a tractor, Funding opportunities for poultry and piggery, RDP housing, Sports grounds, Additional water taps, Toilets for new houses, Scholar transport, High Must light, Ploughing of fields and LIMA, Electricity in fills
- Linotsing**
Water, Access road, Clinic, Community hall, Sports field
- Mahlake**
Water, Preschool, Ploughing of fields, Donga rehabilitation, Community hall, Sports ground, Mobile clinic services
- Soloane**
Water, RDP houses, Fencing of Fields, LIMA, Sports ground, Mobile clinic services, Toilets in new houses
- Purutle**
Access road maintenance, Mobile clinic services, Electricity, Water: borehole, Community hall.
- Ramafole**
Toilets, Water: borehole, RDP houses, Preschools, Sports grounds, Access road from the preschool, Access road in the extension area
- Mideni**
Community hall, Sports ground, RDP Houses, Fencing of Fields
- Moyeni**
Access road, Electricity, RDP Houses
- Zimpofu**
Electricity, Water, Fencing, Feed for animals in winter, Access road to be extended and also maintained, Clinic services, Fencing of fields
- Madlangeni at Zingcuka**
Electricity, RDP houses, Access road to Ezibengwini



TSHANI
CONSULTING C.C.



ANALYSIS & WARD PROFILING FOR THE 26 WARDS OF MATATIELE LOCAL MUNICIPALITY

WARD PRIORITY - WARD 24

Legend

- IRM
- DoE
- Ward 24
- Wards
- Settlements
- Secondary Roads



Source: Eastern Cape Provincial Spatial Development Framework 2017
Matatiele Local Municipality

Limits of Liability and Warranty Disclaimer

This Data is for information purposes only.
No liability shall devolve upon local authority
or its officials through the use thereof.